

SUPPORTING YOU THROUGHOUT YOUR CAREER:

# A guide to library services for nurses and midwives at UHCW





# UHCW Library and Knowledge Services

---

The UHCW Library and Knowledge Services are here to support nursing and midwifery staff at UHCW with a wide range of resources and services tailored to your information needs.

Need evidence to support patient care? Moving into a research or management role? Or perhaps are you are returning to study and need to refresh your information skills. Wherever you are in your career, the UHCW Library team is on hand to help you access and use high-quality evidence in practice.

This guide highlights key library resources and services for nursing and midwifery staff, including online resources, point-of-care tools and training opportunities.

Not registered with the Library yet? Download a registration form from our website and email it to [library@uhcw.nhs.uk](mailto:library@uhcw.nhs.uk) or visit the helpdesk to register in person.

Most of the resources and services in this guide will require an OpenAthens login in order for you to access them. You can register for an OpenAthens login here: <https://openathens.nice.org.uk/>

If you have any queries about accessing these resources, or your OpenAthens login, please contact **Helga Perry (Electronic Systems & Resources Librarian)** via [Helga.Perry@uhcw.nhs.uk](mailto:Helga.Perry@uhcw.nhs.uk)

---

## Welcome

# Resources for Revalidation

## How can the library help?

We can help you meet your revalidation CPD requirements by providing access to both participatory and non-participatory learning. For example:

- If you are undertaking enquiry based research as one of your CPD activities, we can help you access the latest evidence.
- You could achieve your participatory learning requirements by attending library training sessions - we're happy to provide certificates of attendance for your portfolio.

Read on to find out more about the e-resources, databases and training on offer.

### CPD Launchpad

CPD Launchpad enables nurses and midwives to view and read online articles and build up a portfolio to support revalidation. It includes links to full text, quizzes and opportunities for reflection, all summarised in a handy dashboard.

Find out more: [tinyurl.com/cpdlaunchpad](https://tinyurl.com/cpdlaunchpad)

### e-Learning

The training pages on the library website summarise a series of online learning linked to information, research and health literacy skills.

Find out more: [tinyurl.com/uhcwelearning](https://tinyurl.com/uhcwelearning)



Revalidation



## Key Resources

### Clinical Key for Nursing

A simple-to-use search tool that provides access to full-text e-books and journals published by Elsevier Science and international guidelines including NICE. Use the in-built 'presentation maker' to add image content to your PowerPoint presentations

### MAH Complete

Another simple search tool offering access to 65,000 full-text articles, covering topics relating to nursing, midwifery and allied health professions. Includes the British Journal of Nursing, British Journal of Midwifery and Journal of Wound Care.

### Royal Marsden Manual

The Royal Marsden Manual Online edition provides up-to-date, evidence-based clinical skills content related to essential aspects of patient care.

### Point-of-care tools

At UHCW, we have access to two clinical decision-making tools, designed to be used at the point-of-care. **BMJ Best Practice** is great for nurse prescribers, advanced practice specialists and nurse practitioners. We also provide access to **DynaMed** which offers excellent evidence-based topic summaries.

These resources will require an OpenAthens account.  
Register online here:  
<https://openathens.nice.org.uk/>



### CINAHL

CINAHL Complete is the world's largest database of literature on nursing and allied health topics and is the definitive choice for any healthcare students, professionals and researchers conducting literature searches in these subjects.

### ProQuest

ProQuest provides access to the British Nursing Index, PsycInfo, Medline and thousands of full text journal articles, doctoral dissertations, images and more. No special searching skills are needed to get started, although advanced searching is available.

### EMCARE


The Ovid EMCARE database provides access to over 3,700 publications covering evidence-based healthcare, all nursing specialties, nursing education, allied health and management topics.

### Medline

Medline is the leading database for biomedical and health sciences literature. It includes over 30 million articles from academic journals covering medicine, nursing, pharmacy, dentistry, biomedical sciences and more.

### **...and many more**

We also have access to a range of other databases, including **PubMed**, **EMBASE**, **Cochrane Library** and more. See our Resources menu on the Library homepage to explore the full range.

A photograph of a desk with a laptop, glasses, a ruler, and a smartphone. The laptop is silver and open, showing the keyboard. A pair of black-rimmed glasses is on the desk to the left of the laptop. A green ruler is at the bottom of the image, and a smartphone is in the bottom left corner. The background is a solid orange color.

# Improve your knowledge and information skills

## How are the sessions delivered?

One-to-one appointments are available either in person or via Microsoft Teams depending on staff availability.

Group sessions will be held via Teams in the first instance, but can be offered in person if PPE and social distancing measures can be guaranteed.

## What do the sessions involve?

Our core training sessions focus on skills relating to '***Finding the Evidence***' and '***Understanding the Evidence***'. Brief course descriptions can be found later in this guide and you can find out more on the training pages of the library website.

The sessions involve a mixture of presentations, hands-on practical activities and group work where appropriate. Support materials will be available for you to use after the session. Certificates of attendance can be provided if requested.

## Want to book a session or discuss your training needs?

Email: **Beth Jackson (Knowledge Skills Librarian)** via [Beth.Jackson@uhcw.nhs.uk](mailto:Beth.Jackson@uhcw.nhs.uk)

Download our training brochure: [tinyurl.com/uhcwtraining](https://tinyurl.com/uhcwtraining)

Training  
Sessions

# Literature Searching Skills

## Getting Started with UHCW Library

If you've just started at UHCW, or haven't used the Library in a while, this session is for you. We'll show you how to find and access our books, journals and other e-resources and provide an overview of all of the services we offer.

## Full Text: The Full Monty

Get the 'bare facts' and 'naked truth' about our full-text books and journals by booking a spot on this session with our Electronic Systems and Resources Librarian. This in-depth exploration of our resources examines tools including Clinical Key and PubMed to help you find the best available evidence.

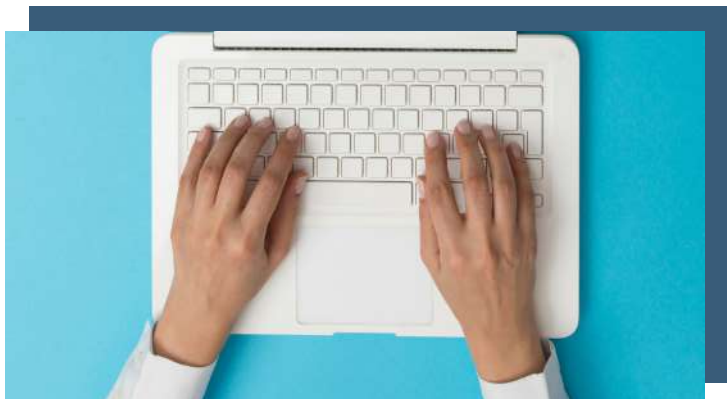


## Smart Searching: writing an effective search strategy

Perfect for the literature searching beginner, this session will help you to plan a robust literature search using PICO and highlights useful tips, tricks and resources to get you started with finding the best evidence.

## Literature Searching in Healthcare Databases

This session will show you how to carry out a literature search in databases including Medline, EMBASE and CINAHL. We'll also show you how to refine your results and save your searches as alerts to keep you up-to-date in your field.



# Knowledge Skills Training



## Critical Appraisal Skills

### Introduction to Critical Appraisal

If you are new to critical appraisal, this session will introduce you to its basic principles and the anatomy of a research paper. We'll also examine different types of study design and explore the tools available to support you in analysing the validity and reliability of healthcare research.

### Critical Appraisal in Practice

Meet with a member of Library staff to critically appraise a research paper of your choice using the appropriate CASP checklist. If you don't have a paper in mind, we're happy to share examples of our own with you.

## Bespoke training sessions

### Don't see the training you need?

We can also provide support with a range of other information skills, and can deliver bespoke sessions on:

- Specific Library resources such as Clinical Key, Dynamed or BMJ Best Practice
- Finding information to help keep you up to date in your field
- Writing for publication
- Referencing / Reference Management Software
- Using social media for continuing professional development
- Health literacy and writing patient information

All sessions of the sessions in this guide are bookable by emailing:  
**Beth Jackson (Knowledge Skills Librarian)** via [Beth.Jackson@uhcw.nhs.uk](mailto:Beth.Jackson@uhcw.nhs.uk)



**Knowledge Skills Training**





# Clinical Evidence Based Information Service (CEBIS)

---

## What is CEBIS?

The CEBIS team of information specialists work closely with clinical staff to embed the use of research evidence in day-to-day practice. So whether you have a question about the best treatment option for a particular patient, a difference of opinion with a colleague about a clinical intervention or need to ensure you are up to date on the latest research in your area – the CEBIS team have you covered.

## CEBIS can support you and your team by:

- Carrying out literature searches to support your clinical decision making, service changes and practice improvements.
- Providing the evidence you need to write patient information leaflets, guidelines, or standard operating procedures.
- Facilitating journal clubs or attending ward rounds to undertake “rapid searches” so you have access to evidence when you need it.
- Offering tailored current awareness bulletins to help keep you up-to-date.
- Helping nursing research staff develop search strategies for systematic reviews, research papers or conference papers.

Find out more about CEBIS:

Library website: [tinyurl.com/uhcwcebis](https://tinyurl.com/uhcwcebis)

Twitter: [@UHCW\\_CEBIS](https://twitter.com/UHCW_CEBIS)

Want to submit a literature search request?

Email: [CEBIS@uhcw.nhs.uk](mailto:CEBIS@uhcw.nhs.uk)

---

**CEBIS**

## Further Support

### Patient Information

Providing patients with high-quality, easy to understand health information means they are more able to give informed consent and play a more active role in their treatment. Our team are here to support you with the approval process for new and updated leaflets. As well as proofreading support, we can also advise on the readability, content and style of your leaflet.

Email us to see how we can help:

**[health.information@uhcw.nhs.uk](mailto:health.information@uhcw.nhs.uk)**

Library website: **<http://uhcwlibrary.org>**

Your one-stop shop for accessing all of the resources available to you from UHCW and the NHS. Access your Library account, search the catalogue, find full-text articles and access our healthcare databases.

OpenAthens: **<https://openathens.nice.org.uk>**

Register for an OpenAthens account in order to access all of our online resources.

For the latest Library news, follow us on social media:



**[@UHCWLibrary](https://twitter.com/UHCWLibrary)**



**[@uhcwlib](https://www.instagram.com/uhcwlib)**

**Have a different question? Contact us:**

Library helpdesk: 02476968829 or Ext: 28829

General Library enquiries: [library@uhcw.nhs.uk](mailto:library@uhcw.nhs.uk)

Patient Information Leaflets: [health.information@uhcw.nhs.uk](mailto:health.information@uhcw.nhs.uk)

Request an evidence search: [cebis@uhcw.nhs.uk](mailto:cebis@uhcw.nhs.uk)

Visit the Library website: **<http://uhcwlibrary.org>**

**Contact us**